



Paper Nativity Scene

What You'll Need

Scissors ✂
Crayons, markers, or colored pencils 🖍
Glue or tape
Cardboard (optional)

1 Color It In!

Add bright colors to Mary, Joseph, Baby Jesus, the Wise Men, the animals, the stable, and the tree. Make it as cheerful as you like!

2 Cut It Out

Carefully cut along the dashed lines around each person, animal, and the stable. Try to stay on the lines!

3 Fold to Stand

Fold the top half of your characters backward so they can stand up on their own.

TIP: IF THEY FALL OVER, TAPE A SMALL PIECE OF PAPER OR CARDBOARD TO THE BACK FOR EXTRA SUPPORT.

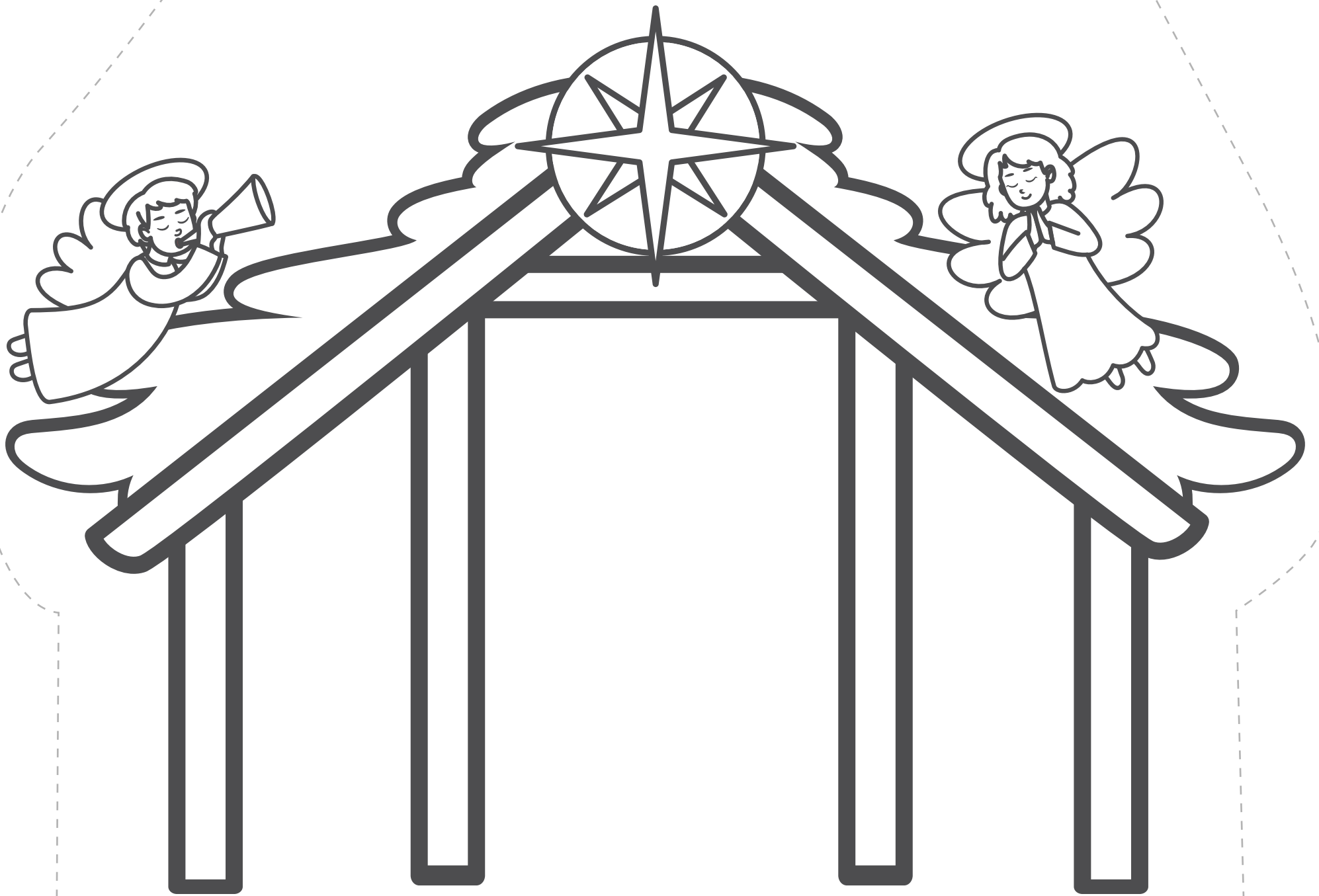
4 Set the Scene

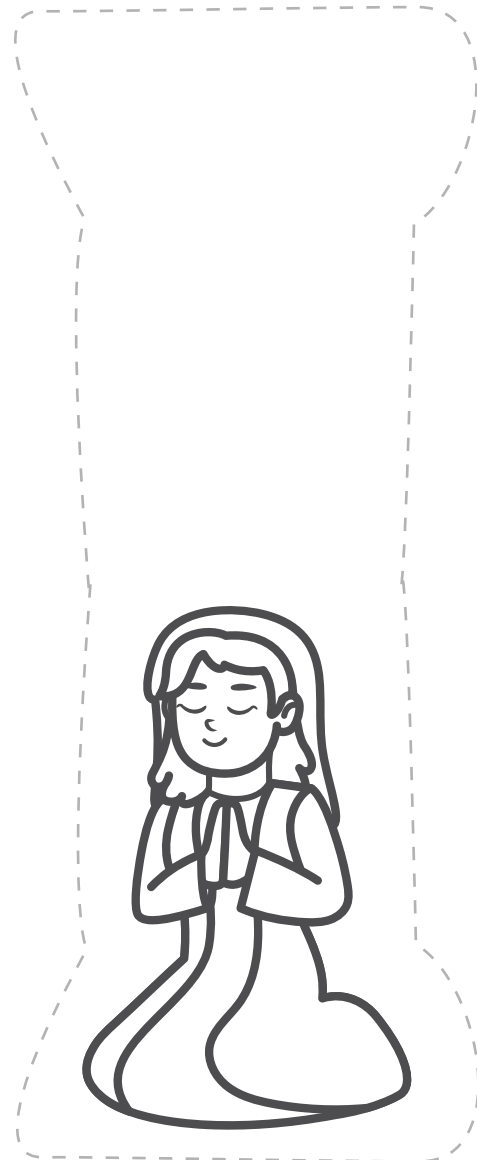
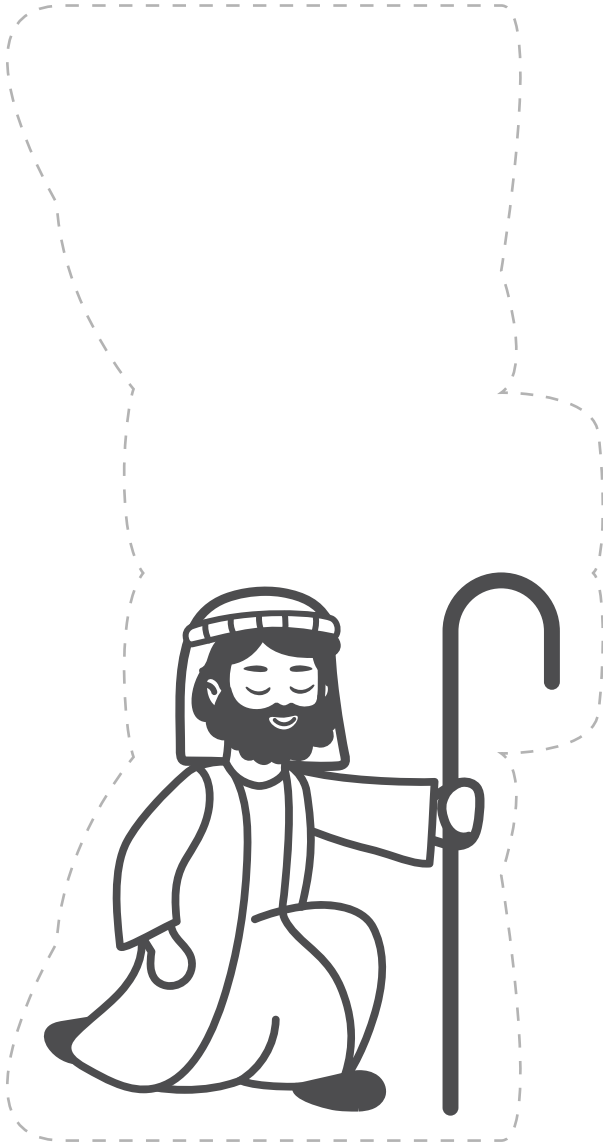
Place the stable in the middle. Put Mary, Joseph, and Baby Jesus inside. Then add the Wise Men, animals, and angels around them.

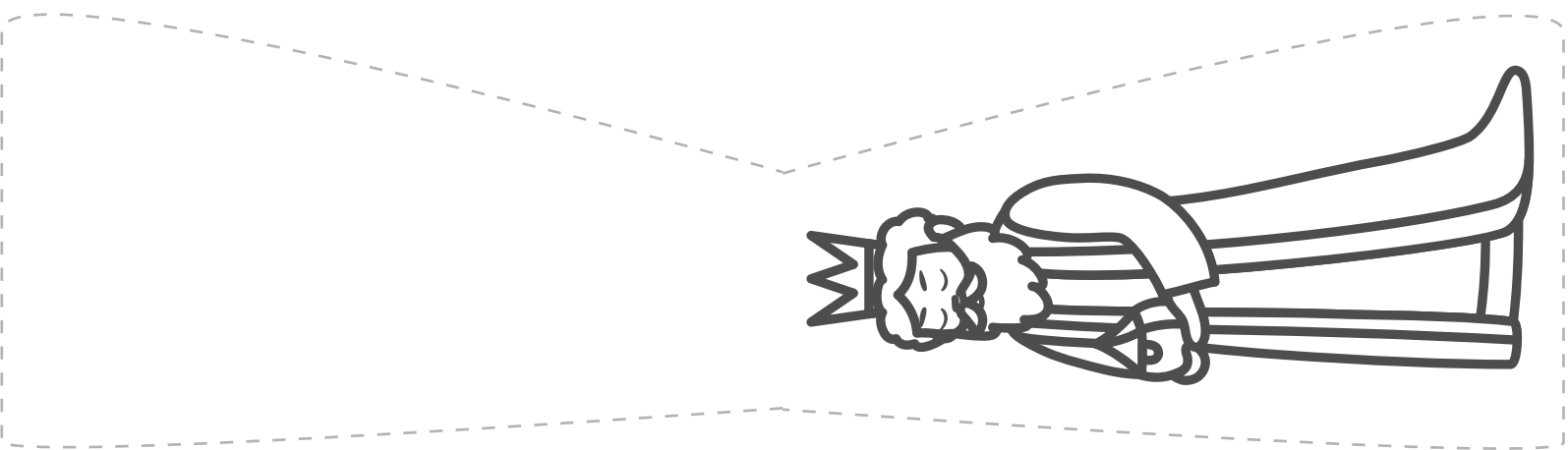
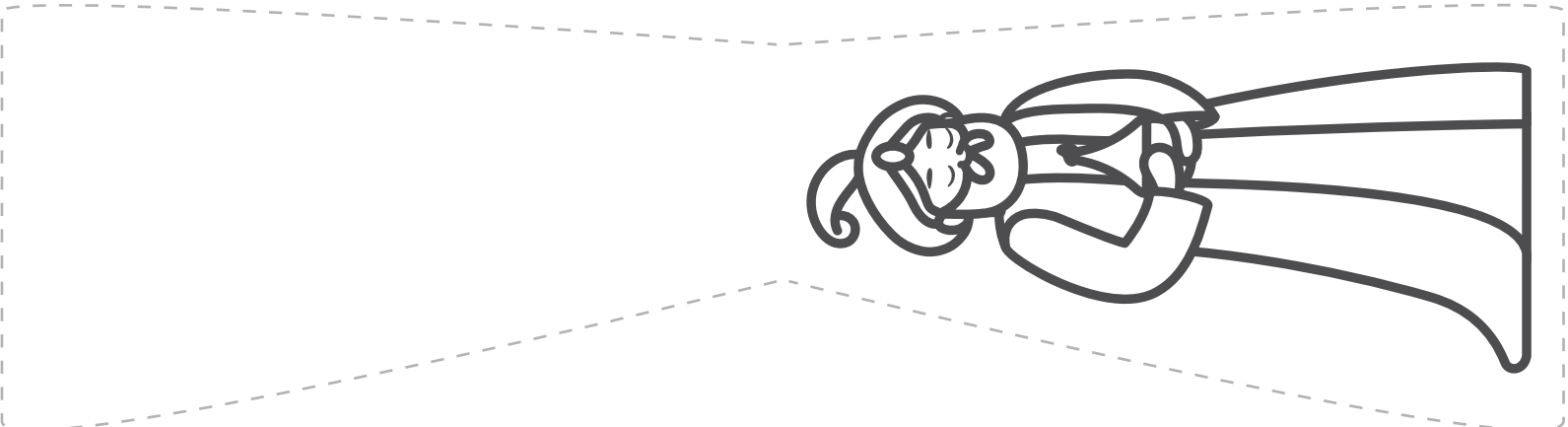
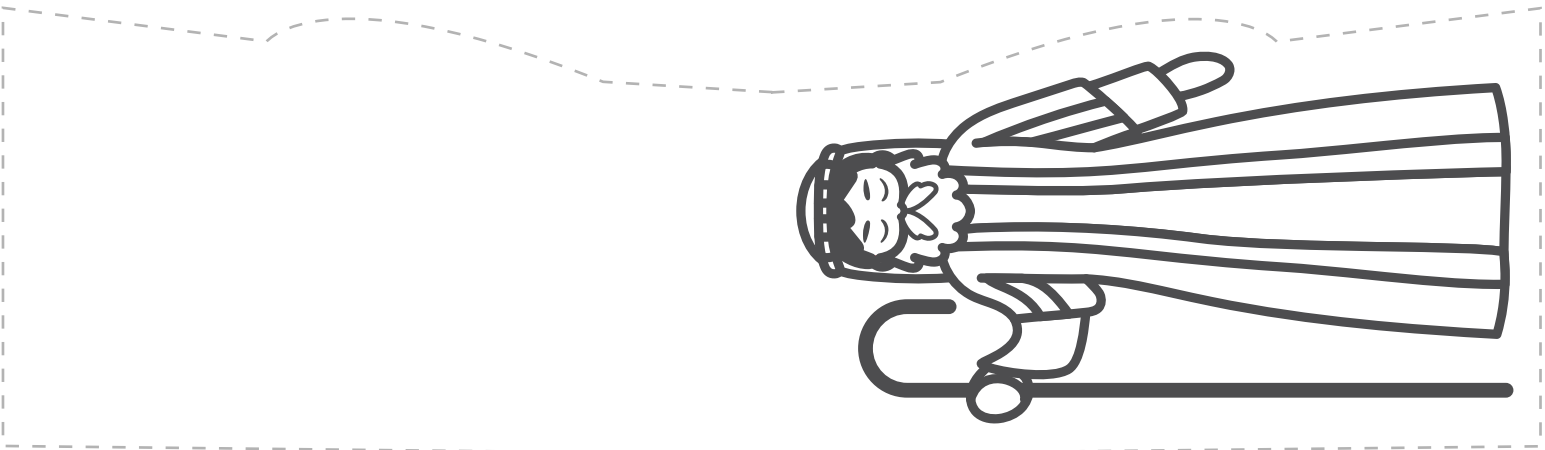
5 Enjoy!

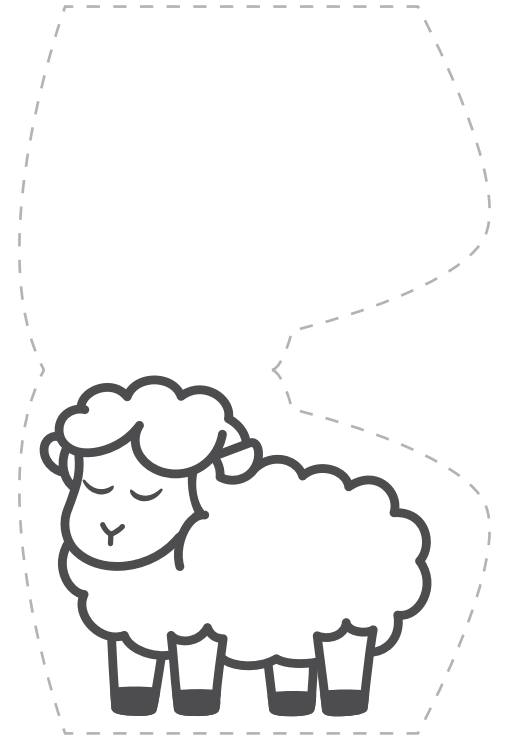
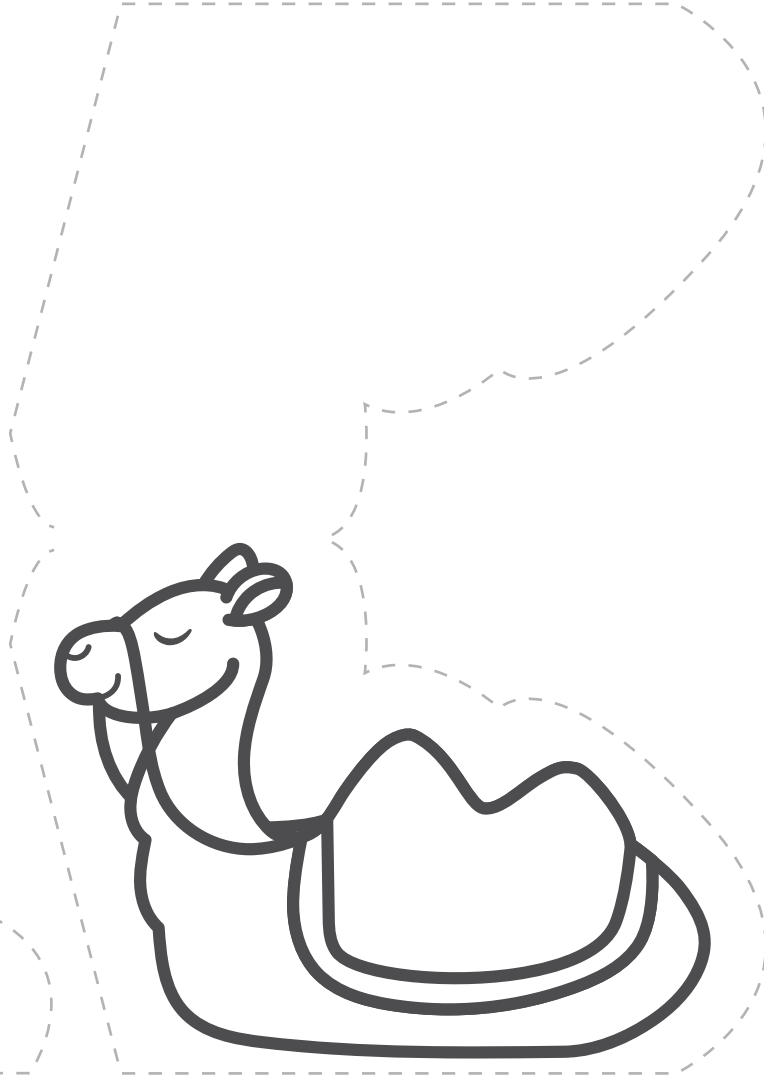
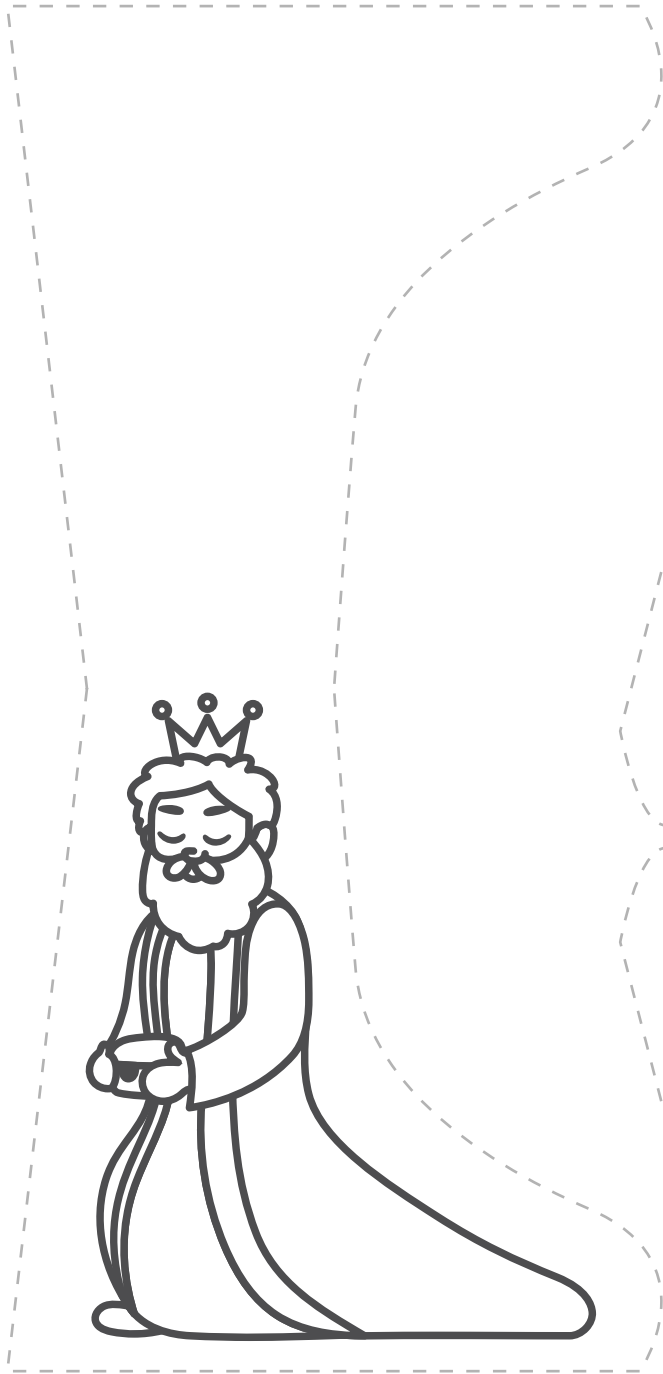
Use it to tell the Christmas story, decorate your table, or surprise your family with your creation.

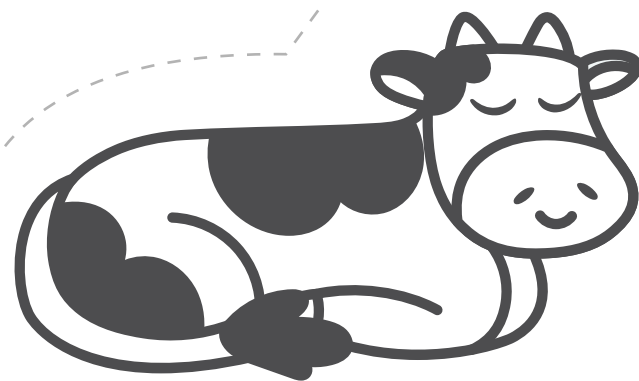
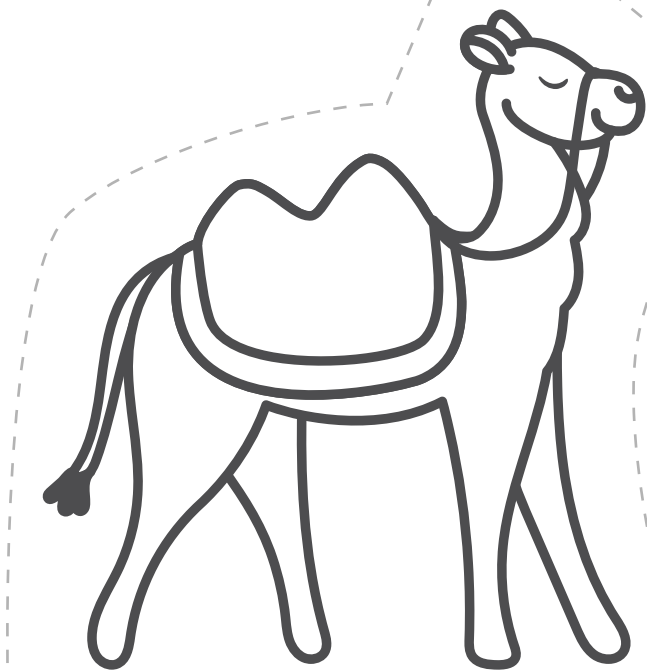
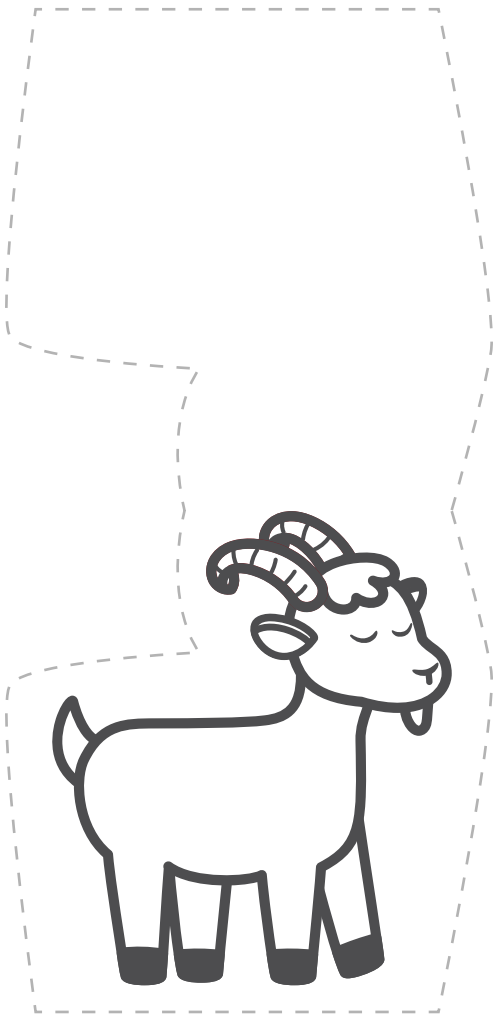


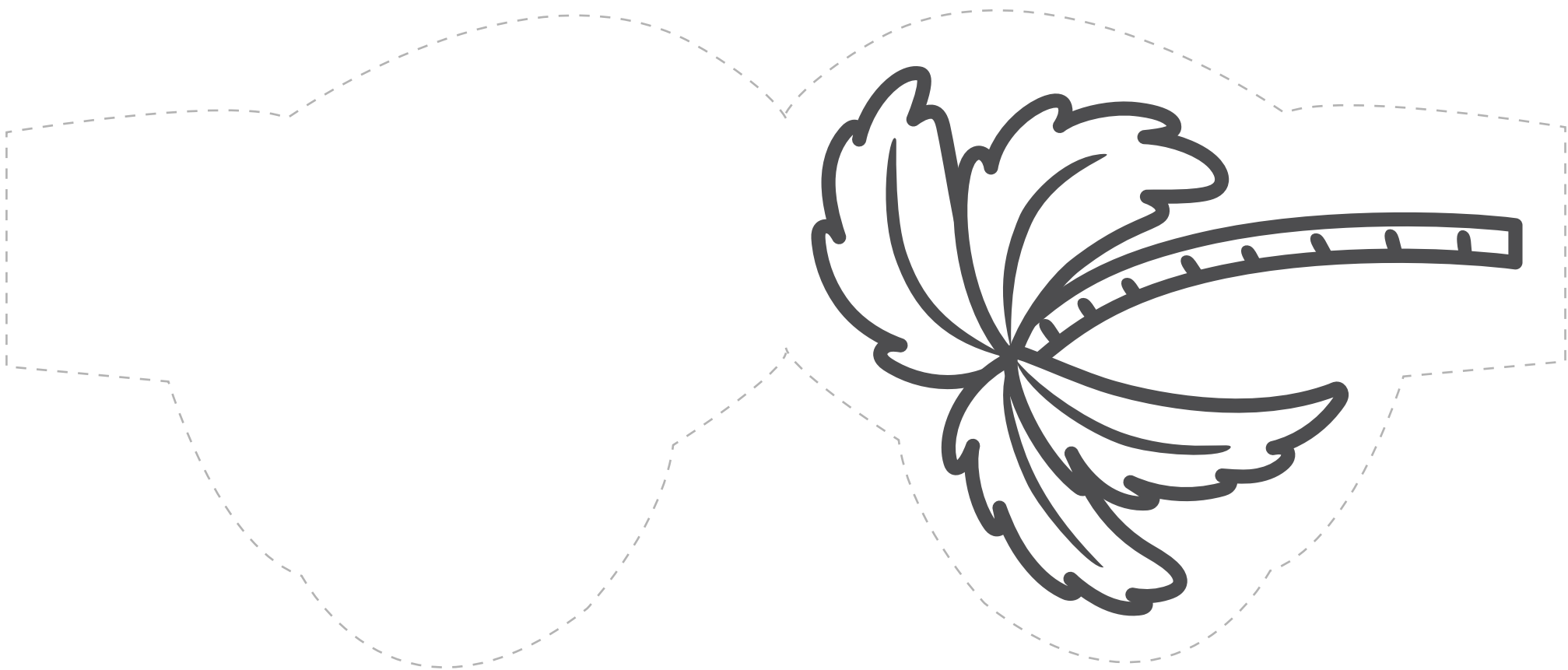
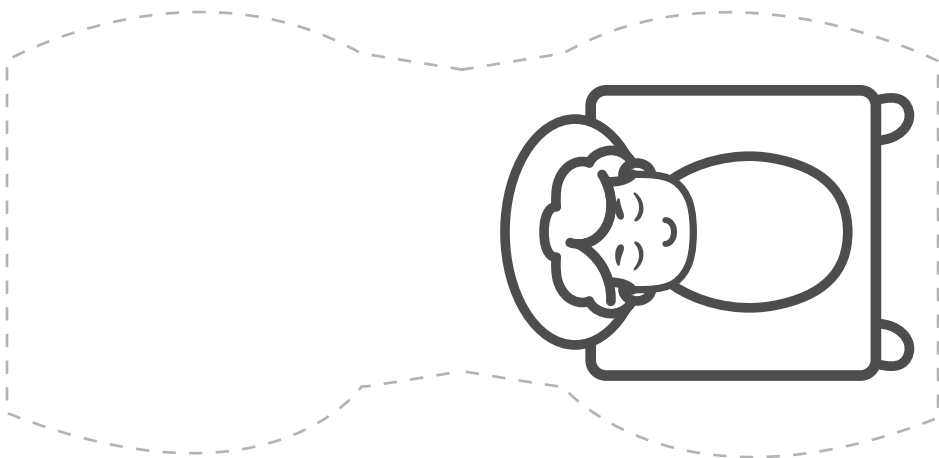














Cut out this piece and place it along the
back of the stable. Put tape along the
top so it can stand up.